

NetSpeaker

IP Audio and Paging System



Centrally managed audio broadcasting system

The NetSpeaker system is a unique solution for public address and paging using Internet and LAN networks as a streaming medium. Its universal infrastructure enables it to be used anywhere from family restaurants to large university campuses or multinational retail chains. The NetSpeaker enables its users to stream music, play jingles, broadcast recorded announcements or page information using a microphone.

The major advantage of the NetSpeaker system is the Central Management tool, which makes management of large scale systems much easier. The on-line status of all system components, stream sources, users etc. is standard. Shopping malls and fashion shops can make use of Internet Radio playback together with scheduled advertisements or service announcements. Your secretary or receptionist can have a new, convenient way to use his/her phone to announce information over the audio system, thanks to simple interconnection with IP PBX systems via SIP protocol.

Benefits:

- Integration with SIP-VoIP systems
- Automated playback of scheduled announcements
- Integrated 16W amplifier
- Easy to deploy and use

Target Groups:

- **Business:** shopping centres, offices
- **Education:** universities, campuses, schools, sports areas
- **Healthcare:** hospitals
- **Transportation:** bus/train stations, airports
- **Government:** public administration, prisons
- **Industry:** manufacturing & production facilities, warehouses



How does the NetSpeaker work?

Hotel



This example shows the use of a NetSpeaker system at a hotel where...

- each guest can locally change the mood of music played in a room
- an event in the business lounge can use the NetSpeaker during presentation
- the restaurant has decent background music to match the cuisine of the day
- the receptionist can page guests using a standard phone

Most valuable benefits



Internet Radio Support

Demand of constant background music at a store, restaurant or shopping mall, requires from you to either create a large playlist so the same music is not repeated too often, or just choose the right Internet Radio and solve this issue effectively. The NetSpeaker system will redistribute the chosen Internet Radio stream into the zones selected by administrator.



Scheduler

Managing regular messages, announcements or safety information is essential for public transport, shops, airports etc. The NetSpeaker's Scheduler function takes full control of such requirements and ensures the playback of chosen message in the right zone at the right time.



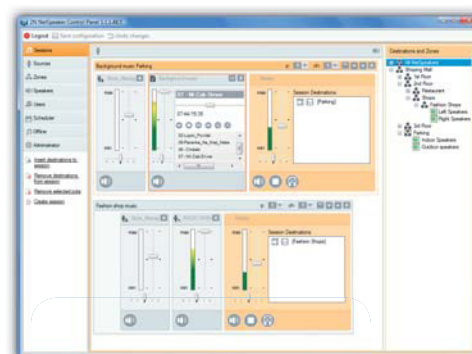
Central Management of the whole system - administration tool

Together with the NetSpeaker you get a graphical administration tool which provides an easy way to centrally control and manage even complex audio installations. Administrators can manage the functions of all NetSpeaker units, create zones, set up user rights, schedule announcements and much more.



NetSpeaker Console and NetSpeaker Player - user tools

The NetSpeaker offers standard PC users intuitive and simple to use applications for voice announcements and music playback. Anyone familiar with Windows Media Player™ or WinAmp™ will be able to use them easily.



NetSpeaker Control Panel



NetSpeaker Console

NetSpeaker unit - Technical Parameters

Interfaces

- 10/100Base-TX Ethernet (RJ45)
- Integrated power amplifier
- Line-out 3.5" stereo jack
- MicroSD card slot for offline playback
- Digital input and output

Audio parameters

- 2x8W (STEREO) or 1x16W (MONO) pure RMS output
- 4 - 16 Ohm loudspeaker support
- 20Hz - 20kHz (+/- 0.5dB) frequency range
- Up to 48kHz/16bit streaming